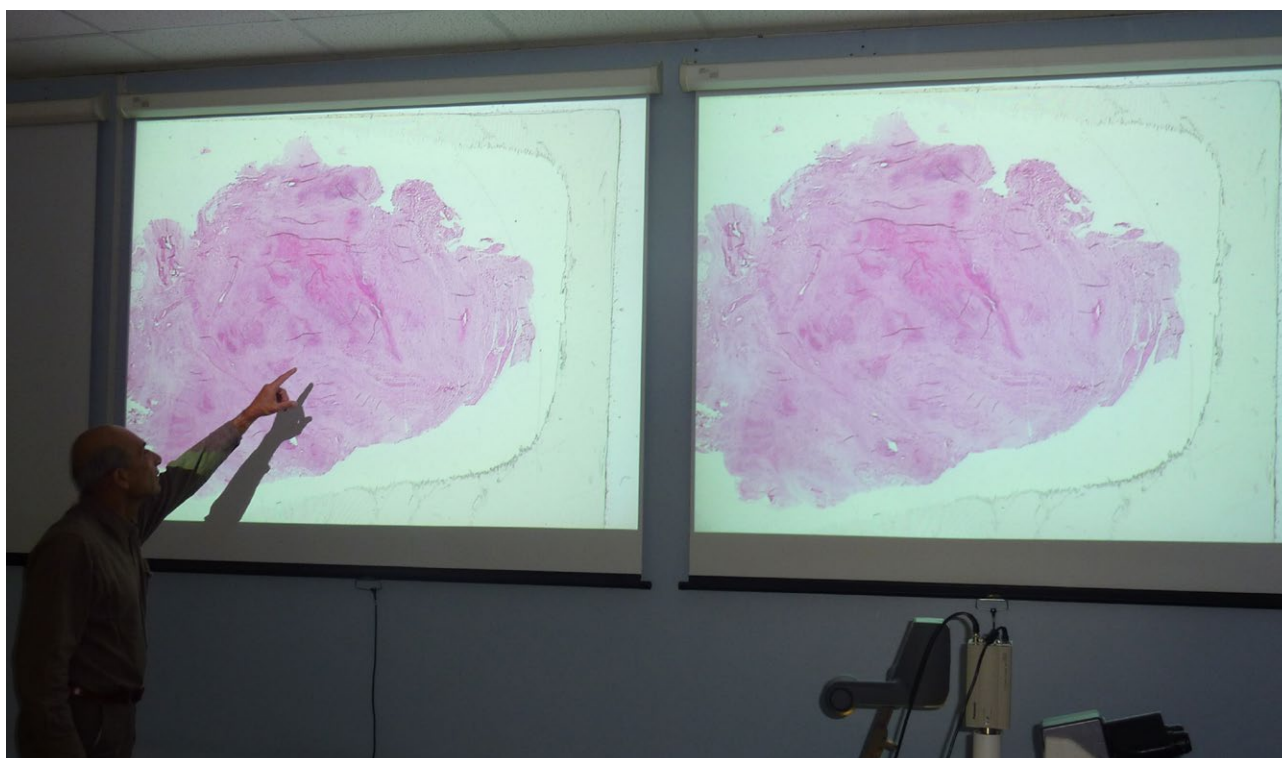




# Imperial College Healthcare NHS Trust



VZ-9plus<sup>3</sup> Visualizer plus lightbox and projector is used to show the shape and extent of the tumour under discussion.

**A**t Charing Cross Hospital, part of the Imperial College Healthcare NHS Trust in London, up to sixty patients and their records in breast pathology are discussed in the MDT (Multi-disciplinary Team) room every week. The meeting starts with the consultant surgeon

on presenting a clinical history of each individual case. The radiologist then shows the X-ray findings and finally the consultant breast pathologist presents the histology of the tumour. Following discussions all parties agree on a plan for the future management of the patient. A WolfVisi-

on VZ-9plus<sup>3</sup> Visualizer plus lightbox and projection system are used by the pathologist in these meetings to show the overall histological shape and extent of the tumour under discussion. The system provides the following benefits:

1. Unlike a microscope, the WolfVision

system can display the overall topography and adjacent environment of the tumour within a microscopic slide. There may be a number of external factors that have great relevance to the tumour's profile. In particular the excision margins and how far they are from the tumour.



# Imperial College Healthcare NHS Trust

The VZ-9plus<sup>3</sup> is able to provide this broader perspective to consultants.

2. The Visualizer can be used to exhibit other important characteristics of the tumour itself, for example the distribution of a specific immunostain within the tumour.

3. The extent of involvement of a lymph node with metastatic tumour can be shown. This is important as a patient with a small micrometastasis may be treated in a different way from a patient with more extensive metastasis.

4. Using a Faxtrone X-ray machine, projecting print outs of tissue slices X-rays under the WolfVision Visualizer can help to better visualise the tumour, its location within the slices and whether it has been completely excised or not.

5. The WolfVision Visualizer can be used for showing typed or untyped reports of discussed cases and any additional notes that are made during the MDT meeting.

6. Using WolfVision's free vSolution Link software, images and X-rays of the tumour of each patient, in part or as a whole, can be captured and archived onto a laptop or PC.

Professor Sami Shousha, MD FRCPATH Consultant and Professor of Histopathology at Imperial College Healthcare NHS Trust comments: "Introducing the WolfVision system has improved the histological presentation of post-operative findings and that helps in reaching management decisions – we now use it in every post-operative Breast MDT meeting".



VZ-9plus<sup>3</sup> Visualizer in use at Charing Cross Hospital, London.