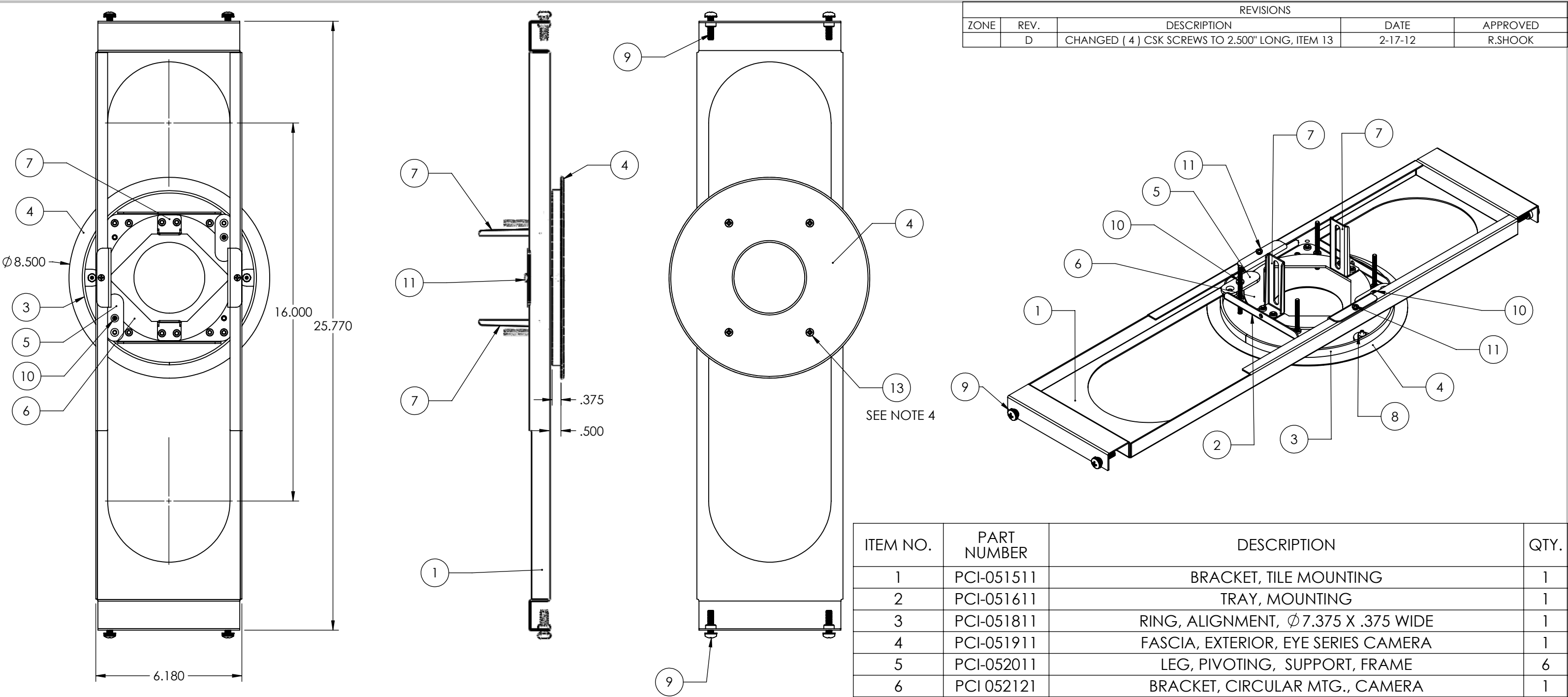
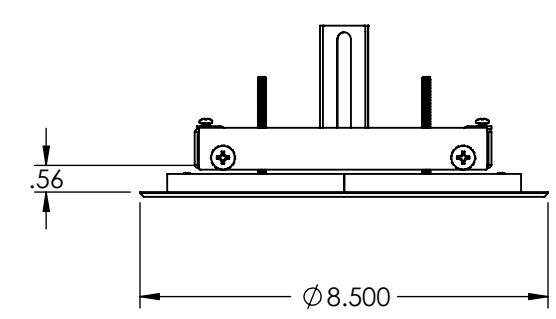



REVISIONS				
ZONE	REV.	DESCRIPTION	DATE	APPROVED
	D	CHANGED (4) CSK SCREWS TO 2.500" LONG, ITEM 13	2-17-12	R.SHOOK



ITEM NO.	PART NUMBER	DESCRIPTION	QTY.
1	PCI-051511	BRACKET, TILE MOUNTING	1
2	PCI-051611	TRAY, MOUNTING	1
3	PCI-051811	RING, ALIGNMENT, \varnothing 7.375 X .375 WIDE	1
4	PCI-051911	FASCIA, EXTERIOR, EYE SERIES CAMERA	1
5	PCI-052011	LEG, PIVOTING, SUPPORT, FRAME	6
6	PCI 052121	BRACKET, CIRCULAR MTG., CAMERA	1
7	PCI-051621	BRACKET, CAMERA ADJUST	2
8	90675A007	NUT, KEPS, #6-32, HEX, STEEL, ZINC	2
9	90402A551	SCREW, SEMS, PANHD, PHILLIPS, #.25-20 X 1.00, STL. ZINC	4
10	90272A191	SCREW, PANHD, PHILLIPS, #8-32 X .312 LG, STL. ZINC	5
11	91772A142	SCREW, PANHD, PHILLIPS, #6-32 X .125 LONG, S/S	2
12	90273A191	SCREW, FLAT CSK, 82 DEG., #8-32 X .312 LG. STL. ZINC	8
13	9000021712	SCREW, FLAT, 82 DEG., PHILLIPS, #8-32 X 2.50 LG, STL. ZINC	4



- NOTES:
- 1. MATERIAL: SEE BOM, ALL HARDWARE PART NUMBERS ARE MCMaster-CARR.
 - 2. FINISH: PAINT LINEAR WHIITE, SMOOTH, **EXTERIOR FASCIA ONLY**
 - 3. DEBURR AND BREAK SHARP EDGES FOR SAFE HANDLING.
 - 4. PAINT COUNTERSINK SCREW HEADS (ITEM 13) LINEAR WHITE. **QTY. 4**



Wolfvision, Inc. claims proprietary rights on the contents disclosed on this drawing and all processes, equipment, components, methods, or any other developments either directly or indirectly related to this project. This drawing is issued in confidence for engineering purposes only and may not be reproduced or used for manufacture of anything shown hereon without direct 'written' authorization from Wolfvision, Inc. to the user.

TOLERANCES: Unless Otherwise Specified

Decimals: Fractions: +/- 1/32"

.xx +/- .015 .xxx +/- .010 Angles: +/- 1/2°

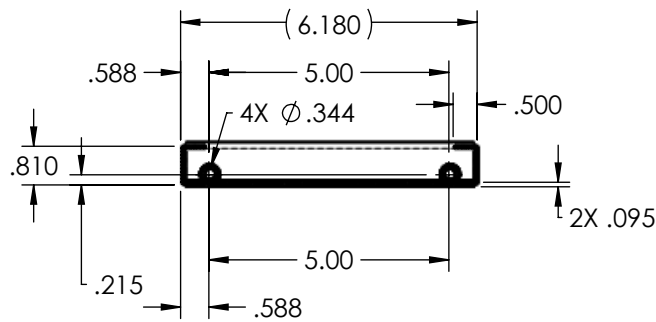
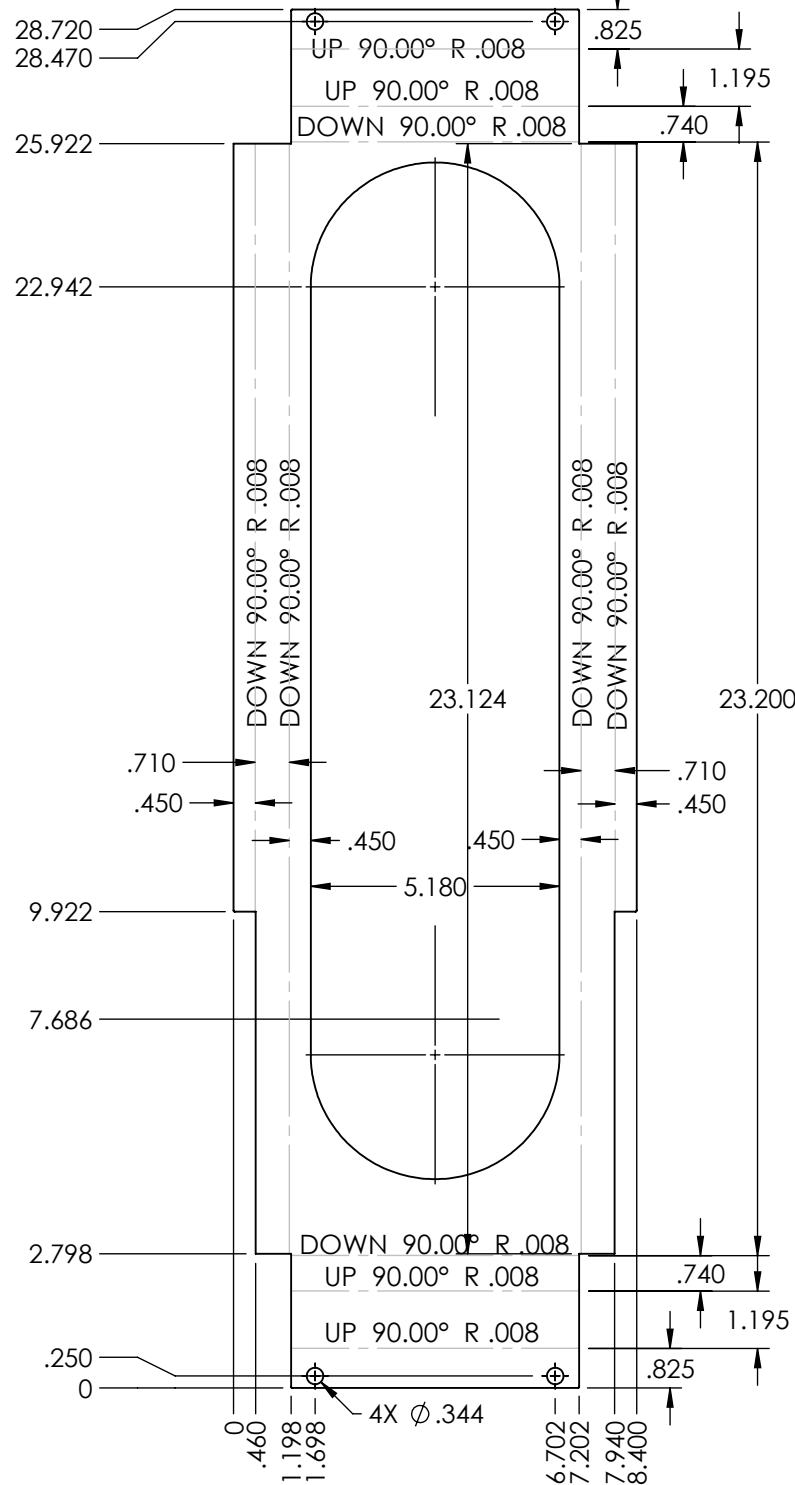
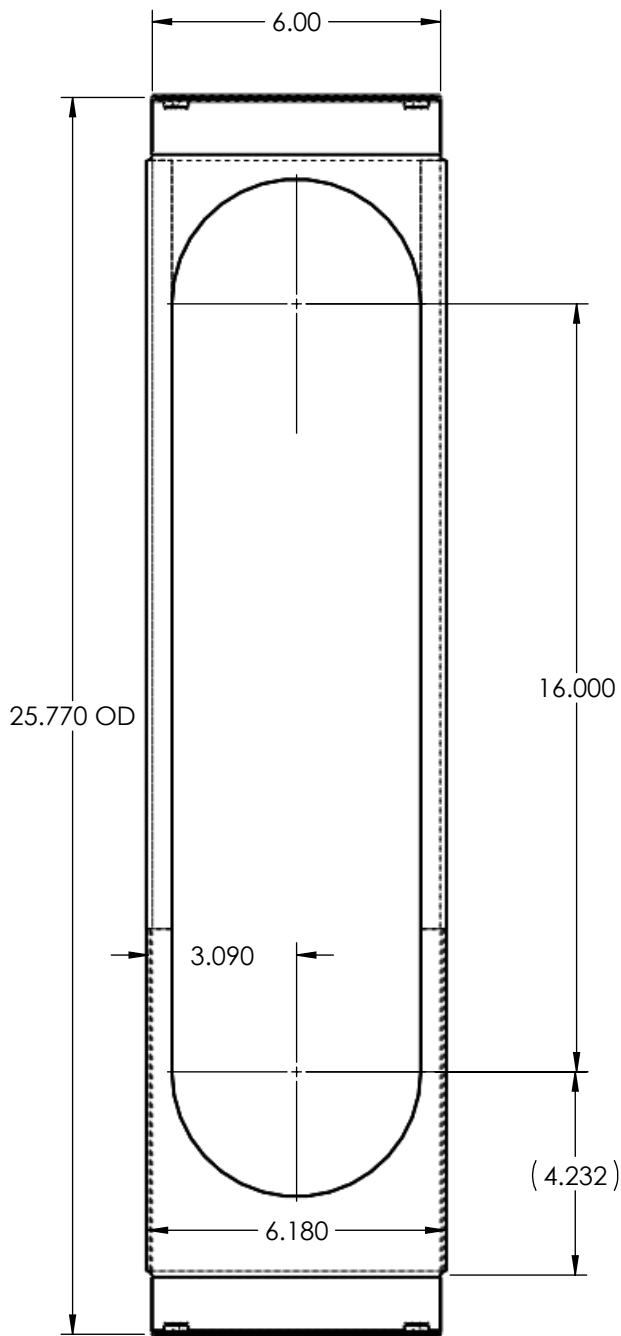
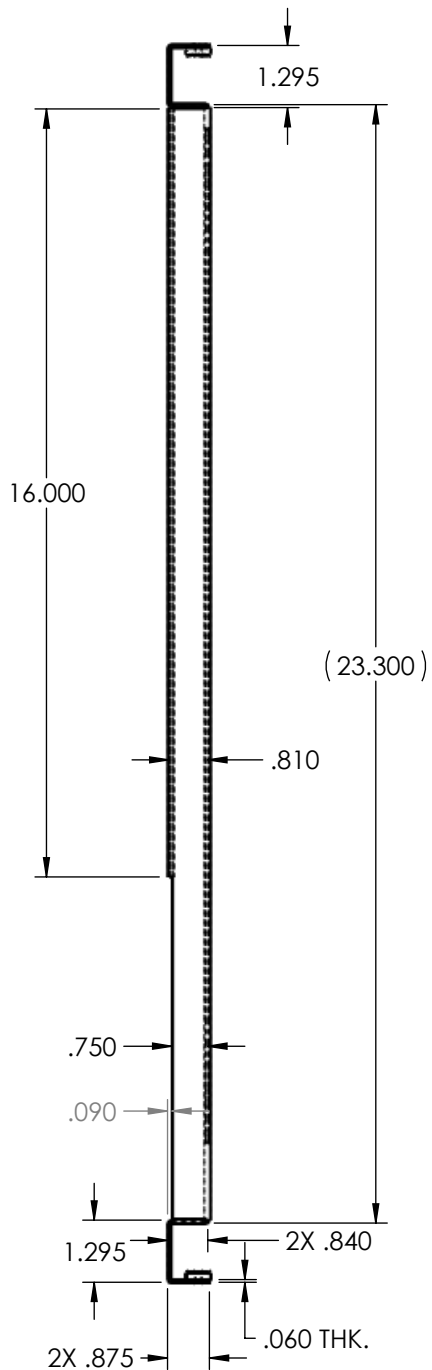
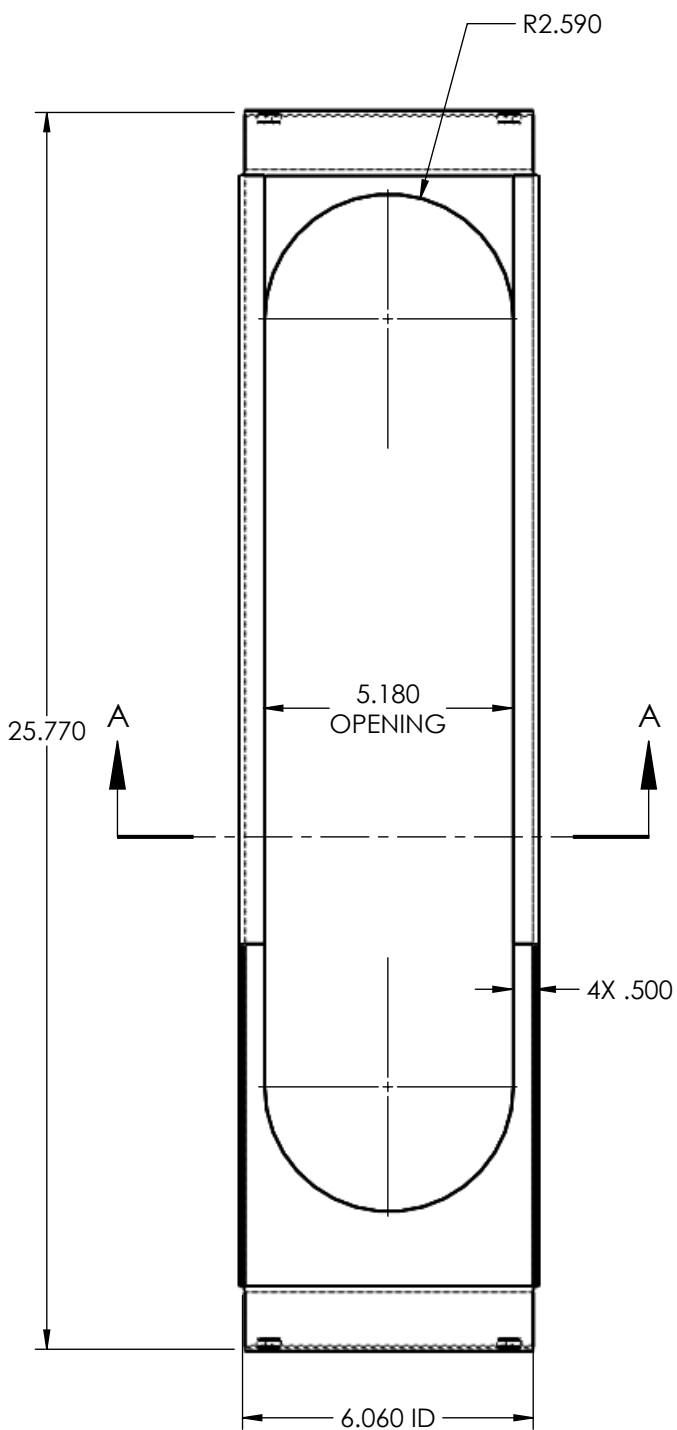
File Name: EYE KIT TILE

Date: 5-19-11	Material: SEE BOM	Finish: CLEAN - ZP FINISH
Drawn By: RJS	Scale: NTS	Sheet 1 of 10

EYE KIT
TILE INSTALLATION
WOLFVISION

Drawing No. ASSY EYE-10 TILE	Rev. D
------------------------------	--------

REVISIONS				
ZONE	REV.	DESCRIPTION	DATE	APPROVED
	A	REMOVED 2 HEMS	7-22-11	R. SHOOK
-	B	INCREASED HEIGHT FROM .685 TO .810	8-8-11	R. SHOOK



SECTION A-A
SCALE 1 : 4

NOTES:

1. MATERIAL: .060 ALUM.. 5052-H-32
2. FINISH: CLEAN - ZP FINISH
3. DEBURR AND BREAK SHARP EDGES FOR SAFE HANDLING.
4. RADIUS .008" BA= .050"
5. PROGRAM FILE : 113521-00
6. CUSTOMER : WOLFVISION

ITEM NO.	PART NUMBER	DESCRIPTION	QTY.
1	PCI-051511	BRACKET, TILE MOUNTING	1
2	CLS-0420-1	NUT, SELF CLINCHING, #1/4-20 THDS.,SS	4

Wolfvision, Inc. claims proprietary rights on the contents disclosed on this drawing and all processes, equipment, components, methods, or any other developments either directly or indirectly related to this project. This drawing is issued in confidence for engineering purposes only and may not be reproduced or used for manufacture of anything shown hereon without direct 'written' authorization from Wolfvision, Inc. to the user.

TOLERANCES: Unless Otherwise Specified

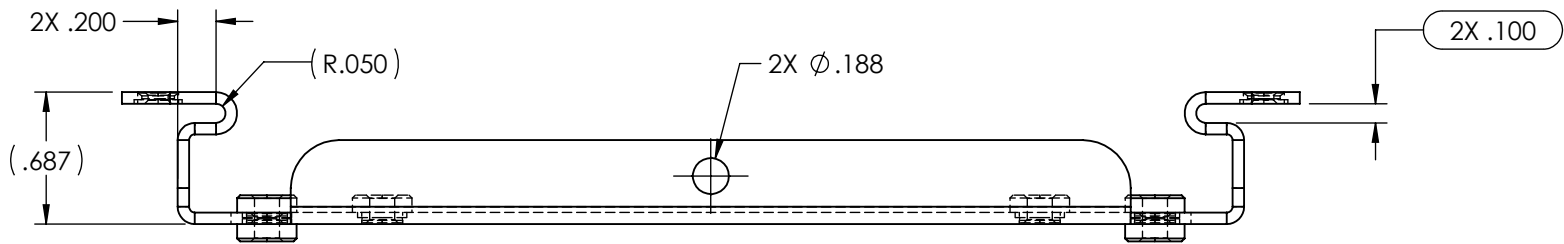
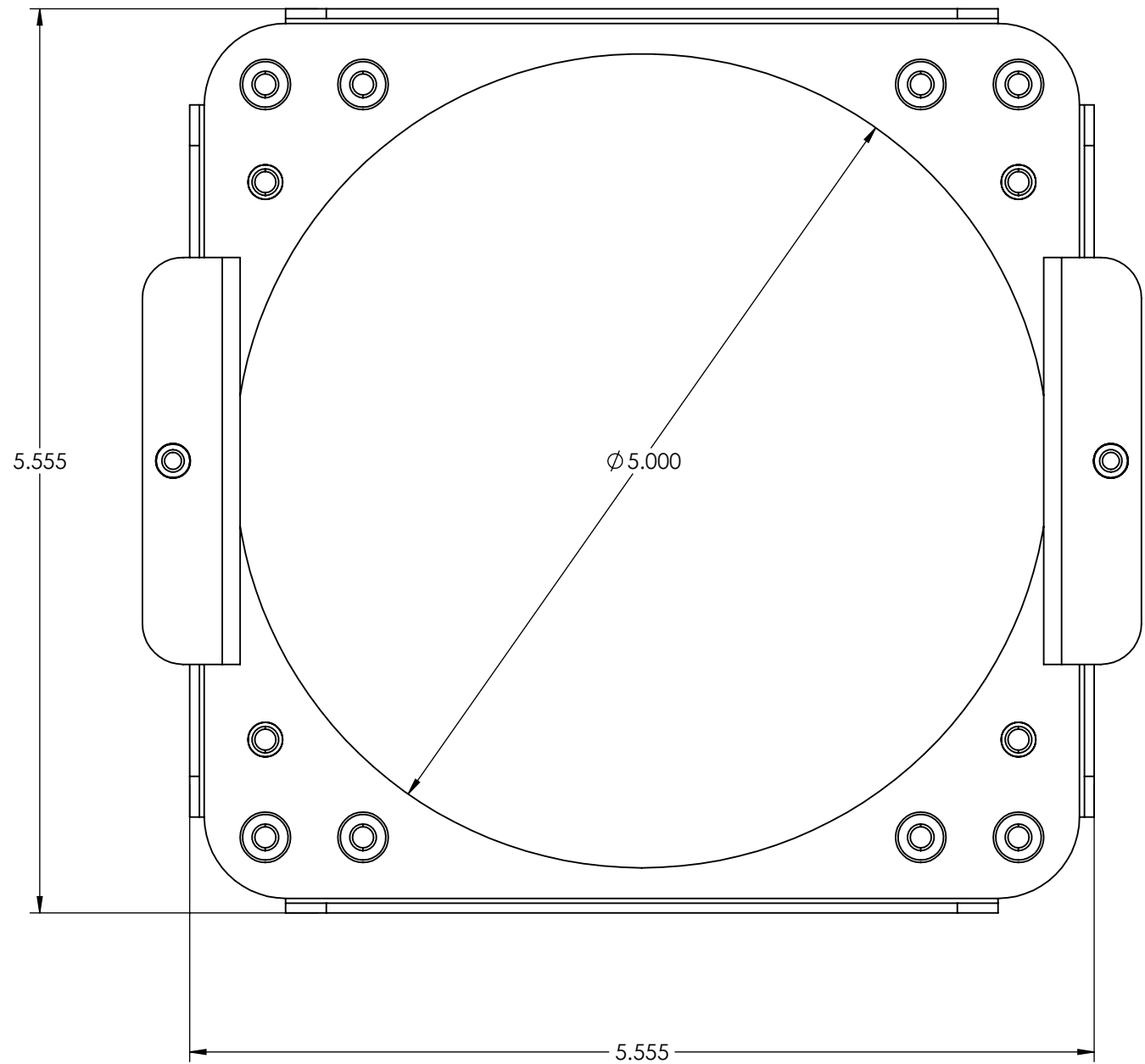
Decimals: .xx +/- .015
Fractions: +/- 1/32"

.xxx +/- .010
Angles: +/- 1/2°

File Name: ---

BRACKET,
TILE MOUNTING
WOLFVISION

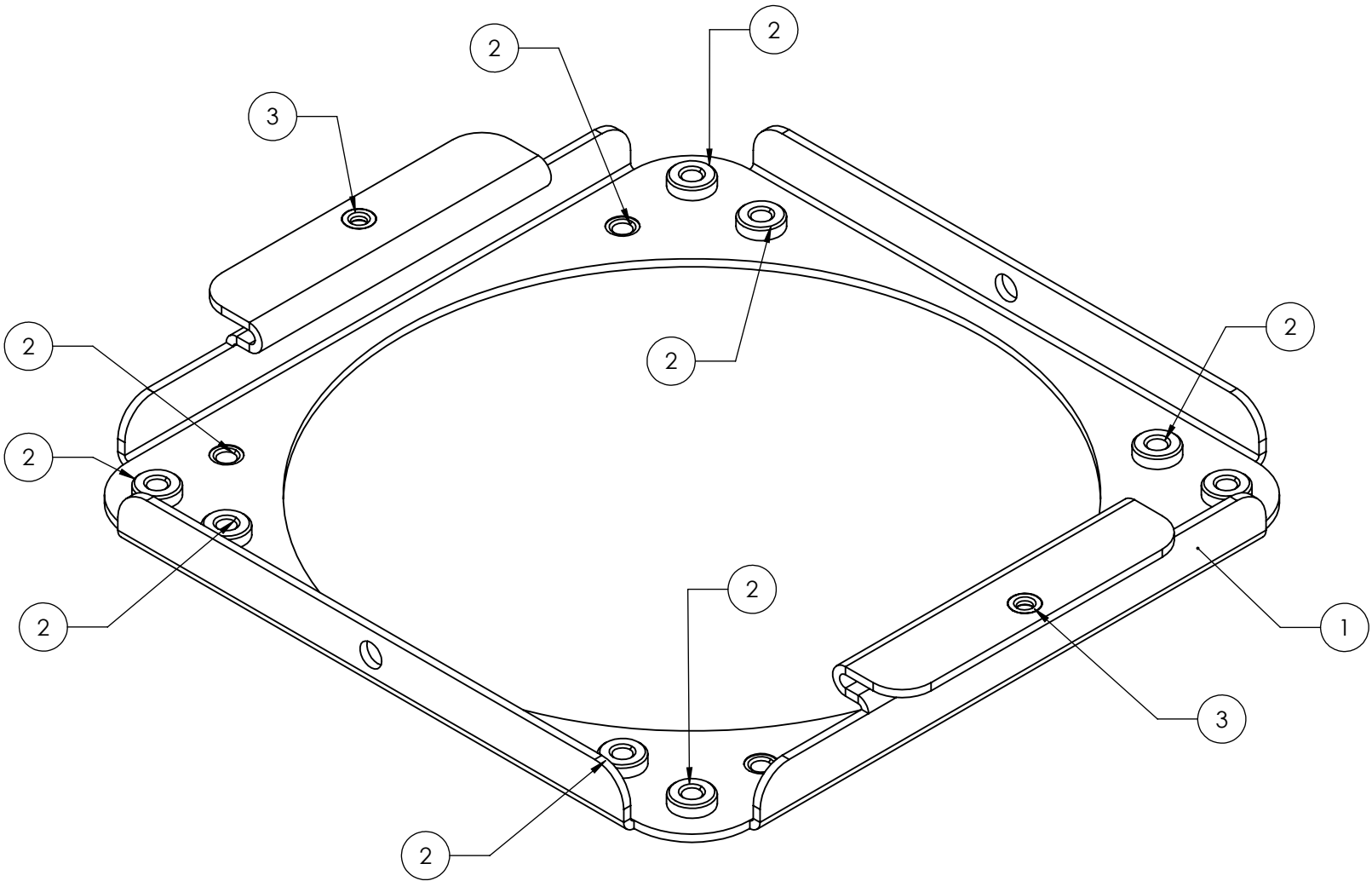
Date: 5-19-11	Material: .060 THK. 5052-H32 ALUM.	Finish: CLEAN - ZP FINISH
Drawn By: RJS	Scale: NTS	Drawing No. PCI 051511
Sheet 2 of 10		Rev. B




NOTES:

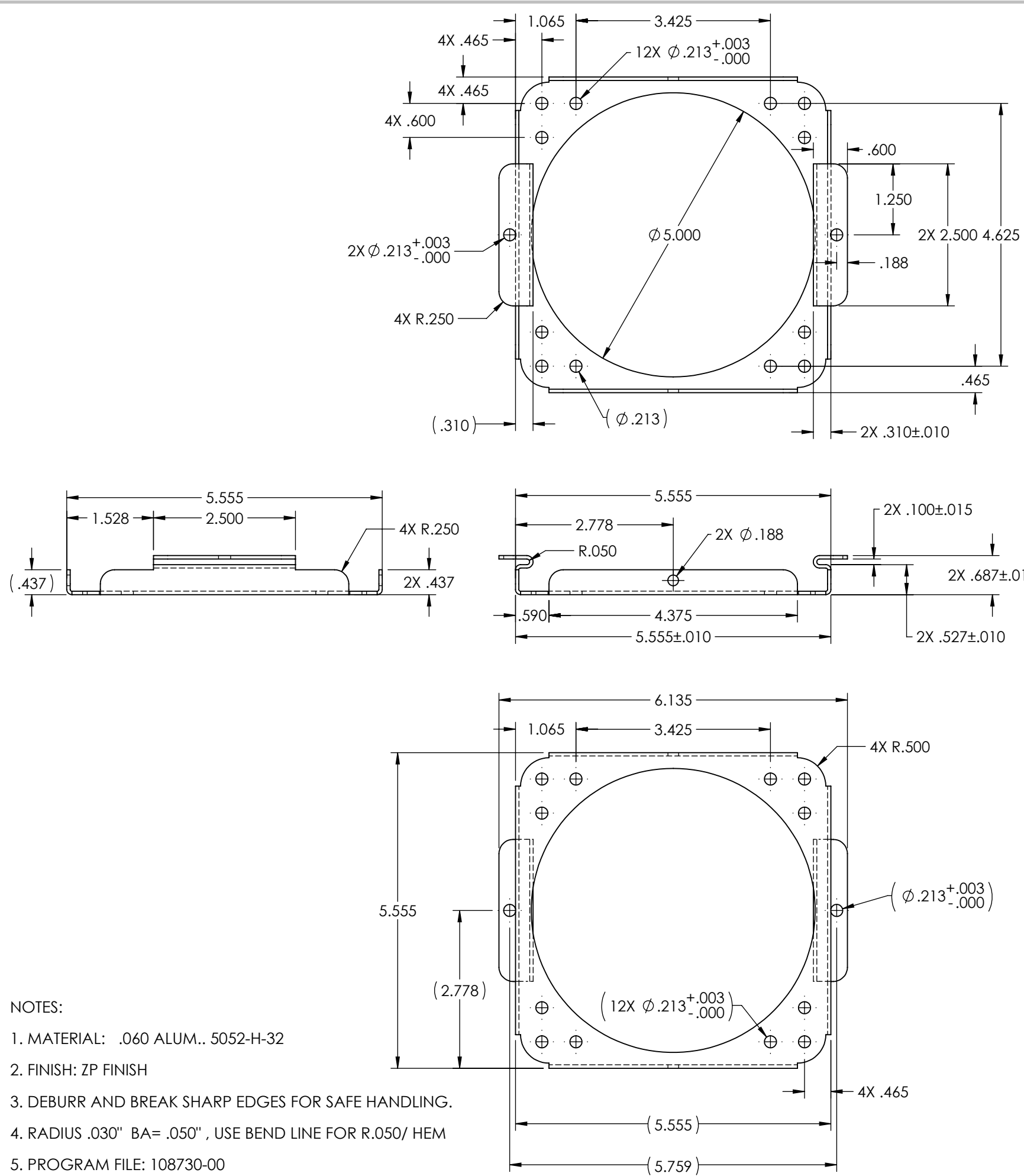
- 1. MATERIAL: .060 ALUM.. 5052-H-32
- 2. FINISH: CLEAN - ZP FINISH
- 3. DEBURR AND BREAK SHARP EDGES FOR SAFE HANDLING.
- 4. RADIUS .030" BA= .050"
- 5. PROGRAM FILE : 108730-00
- 6. CUSTOMER : WOLFVISION

REVISIONS				
ZONE	REV.	DESCRIPTION	DATE	APPROVED
-	A	REMOVED (QTY. 2) F-632-1, MOUNTING COVER	1-31-12	R.SHOOK



ITEM NO.	PART NUMBER	DESCRIPTION	QTY.
1	PCI-051611	TRAY, CAMERA HOUSING	1
2	CLS-832-2	NUT, SELF CLINCHING, #8-32, S/S	12
3	F-632-1	NUT, FLUSH SELF CLINCHING, #6-32 THDS.	2

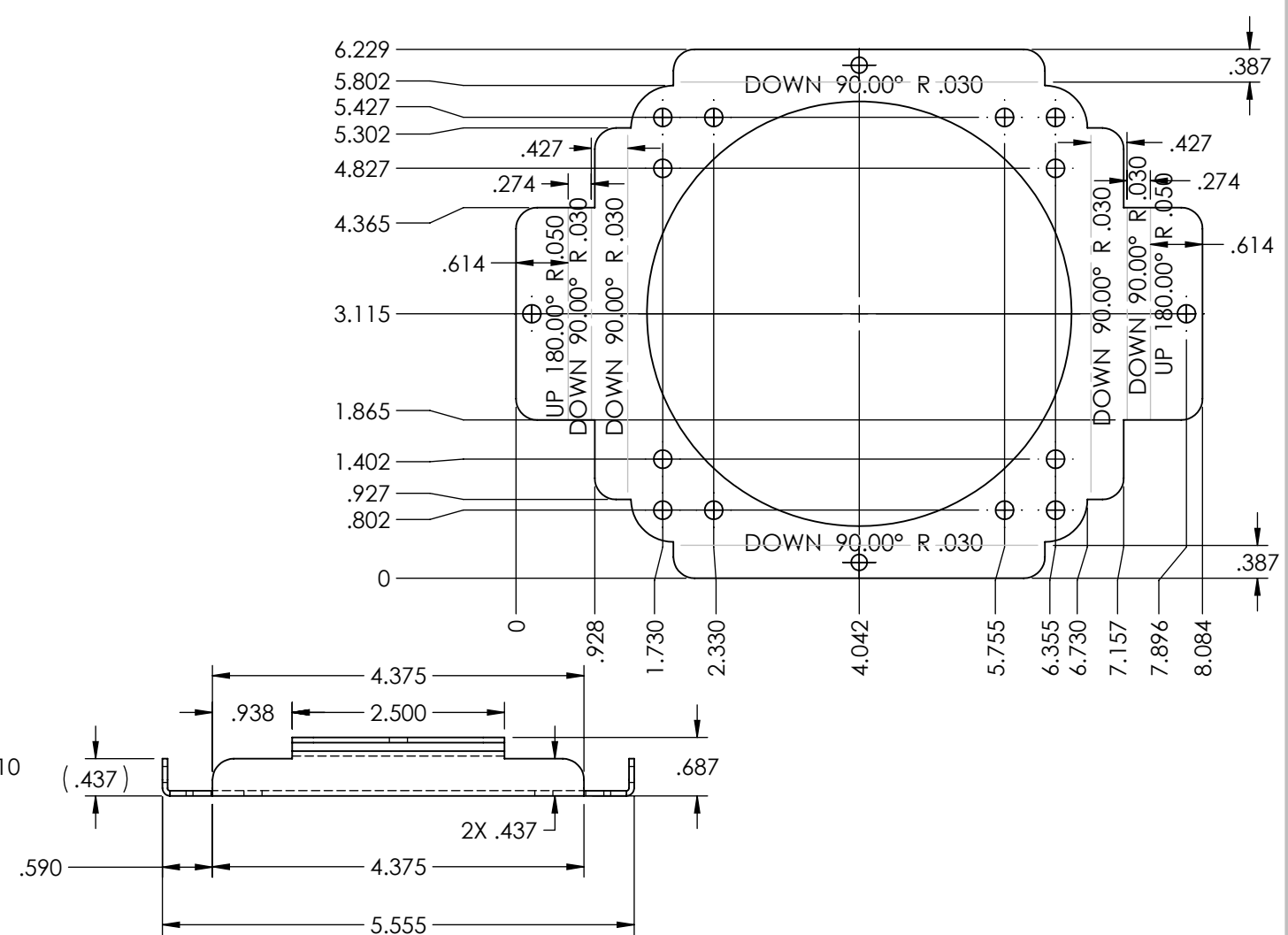
<div></div> <p>Wolfvision, Inc. claims proprietary rights on the contents disclosed on this drawing and all processes, equipment, components, methods, or any other developments either directly or indirectly related to this project. This drawing is issued in confidence for engineering purposes only and may not be reproduced or used for manufacture of anything shown hereon without direct 'written' authorization from Wolfvision, Inc. to the user.</p>	TOLERANCES: Unless Otherwise Specified		TRAY, CAMERA HOUSING WOLFVISION		
	Decimals: .xx +/- .015	Fractions: +/- 1/32"			
	.xxx +/- .010	Angles: +/- 1/2°			
	File Name: TRAY, CAMERA, HOUSING				
Date: 5-16-11	Material: .060 5052-H32 ALUM.		Finish: CLEAN - ZP FINISH	Drawing No. PCI-051611	Rev. A
Drawn By: RJS	Scale: NTS	Sheet 3 of 10			



NOTES:

1. MATERIAL: .060 ALUM.. 5052-H-32
2. FINISH: ZP FINISH
3. DEBURR AND BREAK SHARP EDGES FOR SAFE HANDLING.
4. RADIUS .030" BA= .050" , USE BEND LINE FOR R.050/ HEM
5. PROGRAM FILE: 108730-00
6. CUSTOMER : WOLFVISION

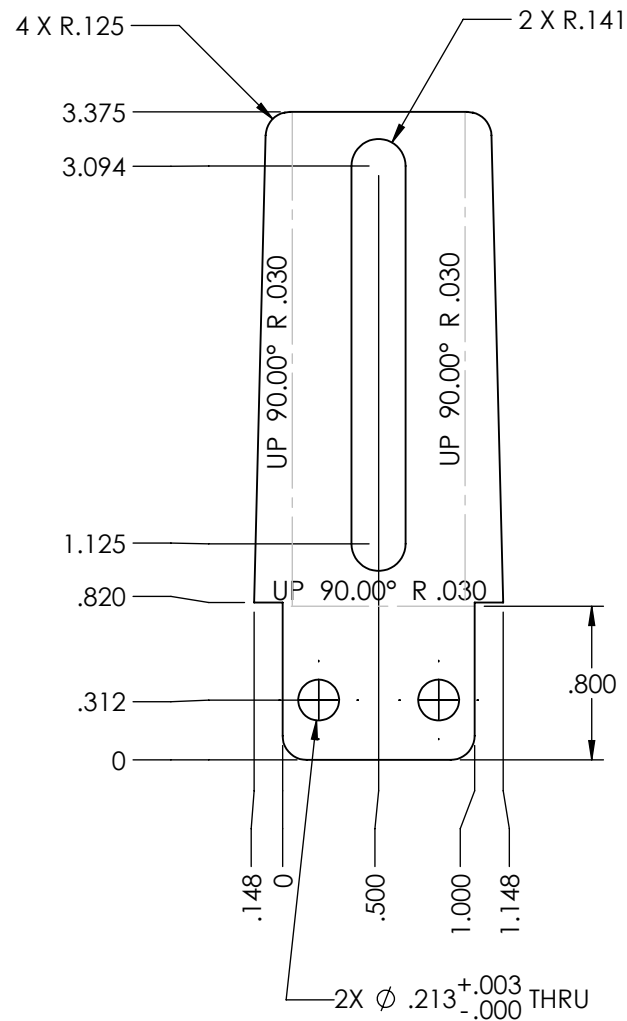
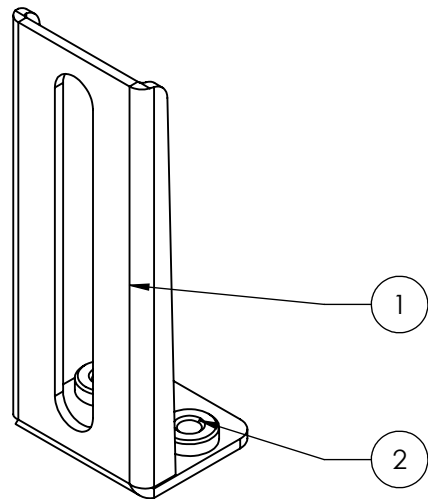
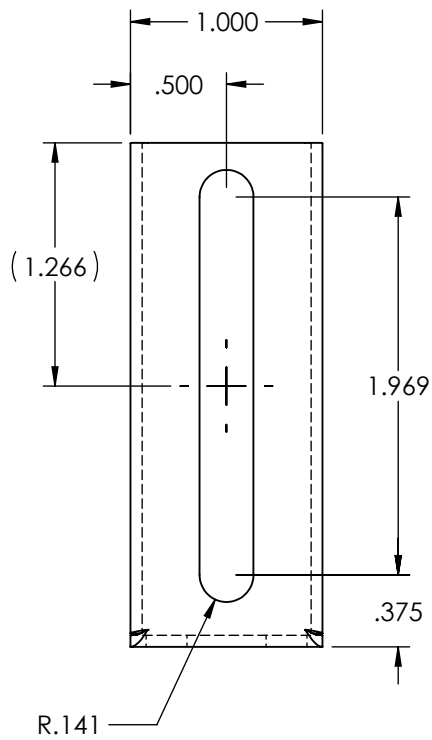
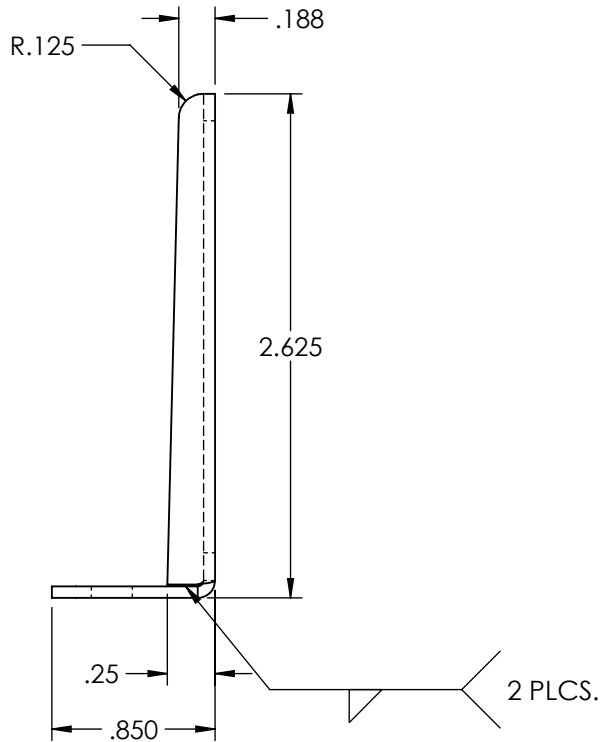
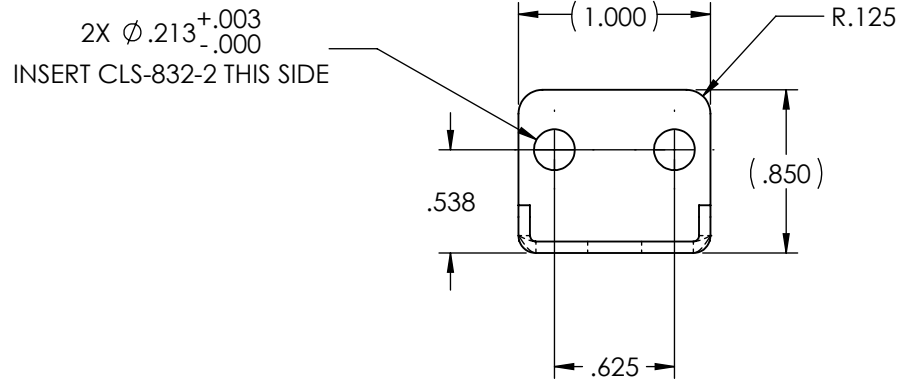
REVISIONS				
ZONE	REV.	DESCRIPTION	DATE	APPROVED
-	A	REMOVED (QTY. 2) F-632-1, MOUNTING COVER	1-31-12	R.SHOOK



WOLFVISION®

Wolfvision, Inc. claims proprietary rights on the contents disclosed on this drawing and all processes, equipment, components, methods, or any other developments either directly or indirectly related to this project. This drawing is issued in confidence for engineering purposes only and may not be reproduced or used for manufacture of anything shown hereon without direct 'written' authorization from Wolfvision, Inc. to the user.


TOLERANCES: Unless Otherwise Specified				TRAY, CAMERA, HOUSING WOLFVISION	
Decimals: .xx +/- .015		Fractions: +/- 1/32"			
.xxx +/- .010		Angles: +/- 1/2°			
File Name: TRAY, CAMERA, HOUSING					
Date: 5-20-11	Material: .060 THK. 5052-H32 ALUM.			Finish: ZP FINISH	
Drawn By: RJS		Scale: NTS	Sheet 4 of 10	Drawing No. PCI-051611	Rev. A

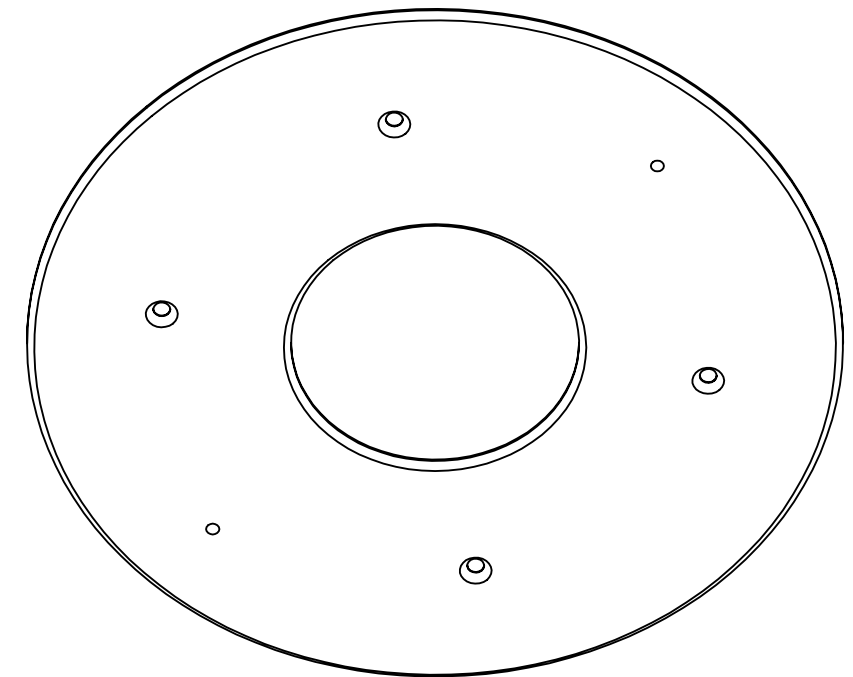
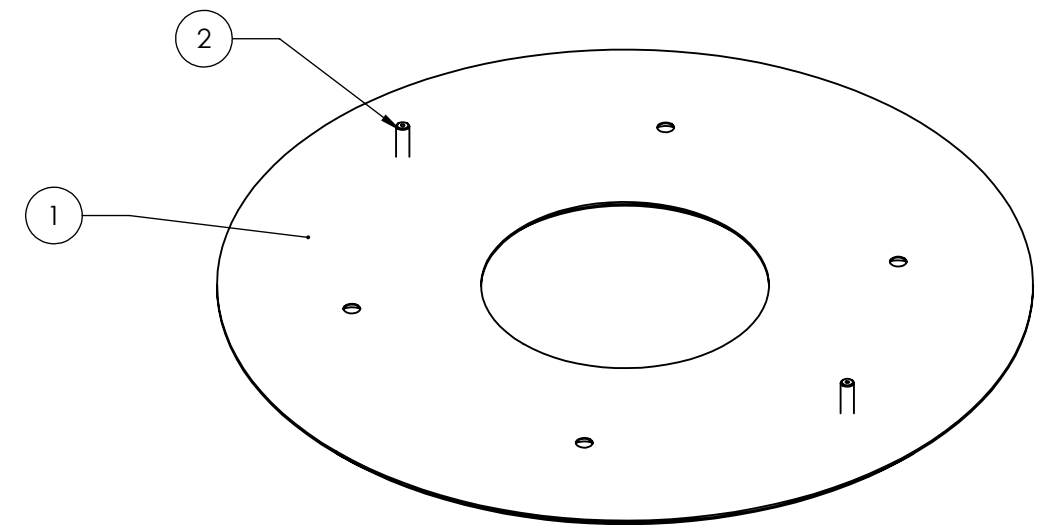
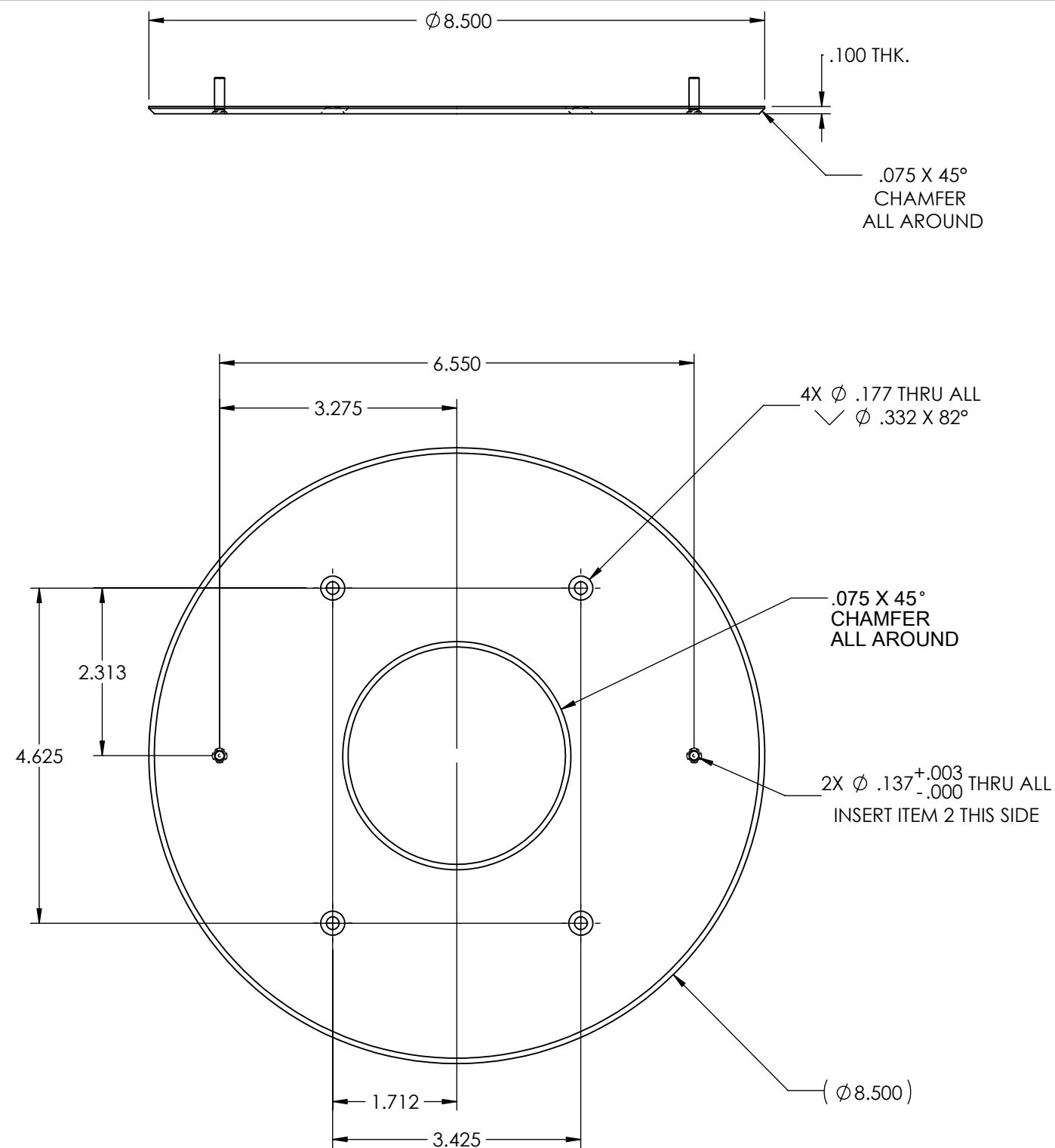


- NOTES:
- 1. MATERIAL: .060 ALUM.. 5052-H-32
 - 2. FINISH: ZP FINISH
 - 3. DEBURR AND BREAK SHARP EDGES FOR SAFE HANDLING.
 - 4. RADIUS .030" BA= .050"
 - 5. PROGRAM FILE: 113527-00
 - 6. CUSTOMER : WOLFVISION

REVISIONS				
ZONE	REV.	DESCRIPTION	DATE	APPROVED
-	A	CHANGED (2) .129 DIA. HOLES TO .213 FOR CLS-832-2	1-31-12	R.SHOOK

ITEM NO.	PART NUMBER	DESCRIPTION		QTY.
1	PCI-051621	BRACKET, CAMERA ADJUSTMENT		1
2	CLS-832-2	NUT, SELF CLINCHING, #8-32, S/S		2


 <p>Wolfvision, Inc. claims proprietary rights on the contents disclosed on this drawing and all processes, equipment, components, methods, or any other developments either directly or indirectly related to this project. This drawing is issued in confidence for engineering purposes only and may not be reproduced or used for manufacture of anything shown hereon without direct 'written' authorization from Wolfvision, Inc. to the user.</p>	TOLERANCES: Unless Otherwise Specified	BRACKET, CAMERA ADJUSTMENT, WOLFVISION		
		File Name: BRACKET, CAMERA ADJUST		
Date: 5-18-11	Material: .060 ALUM. 5052-H32	Finish: CLEAN - ZP FINISH		Rev. A
Drawn By: RJS	Scale: NTS	Sheet 5 of 10	Drawing No. PCI 051621	

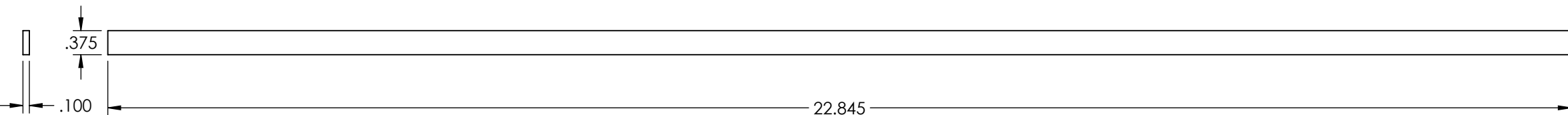
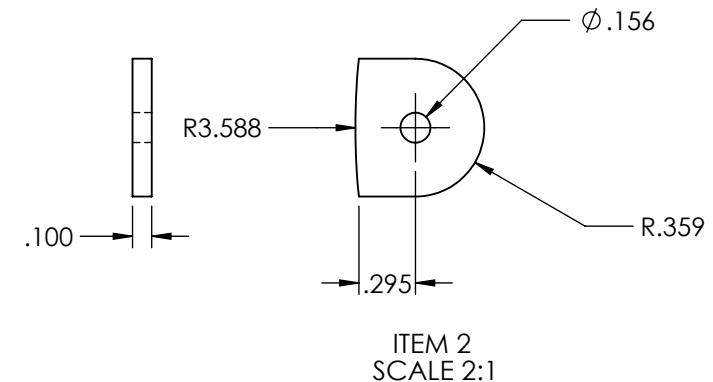
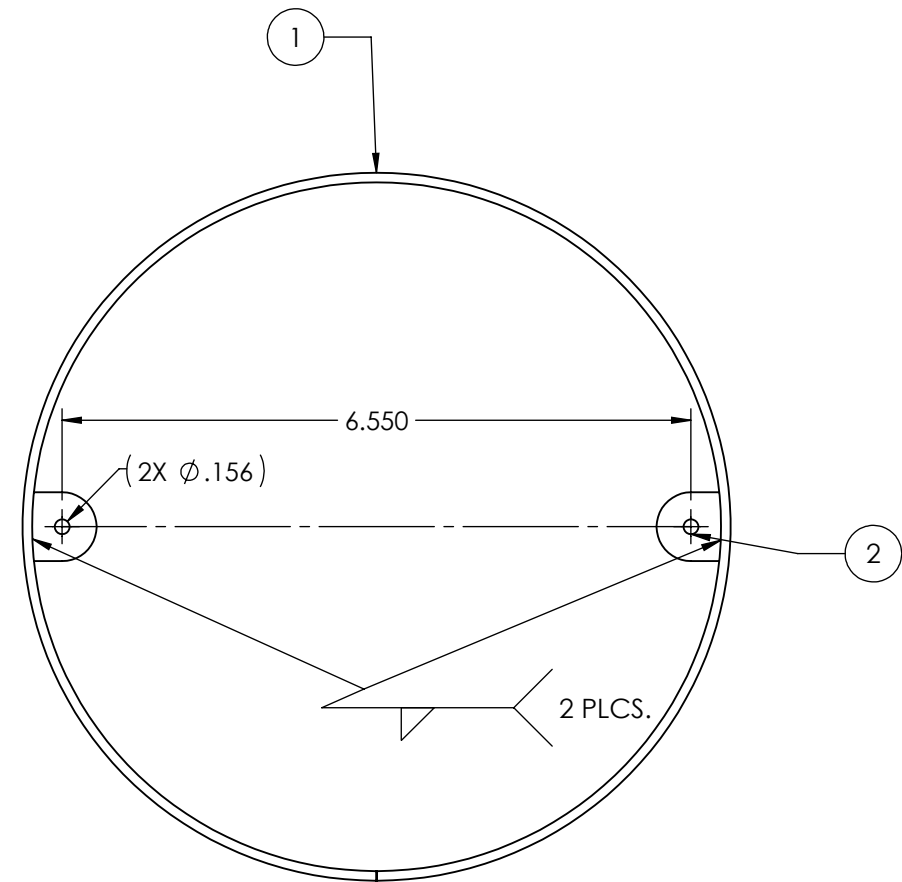
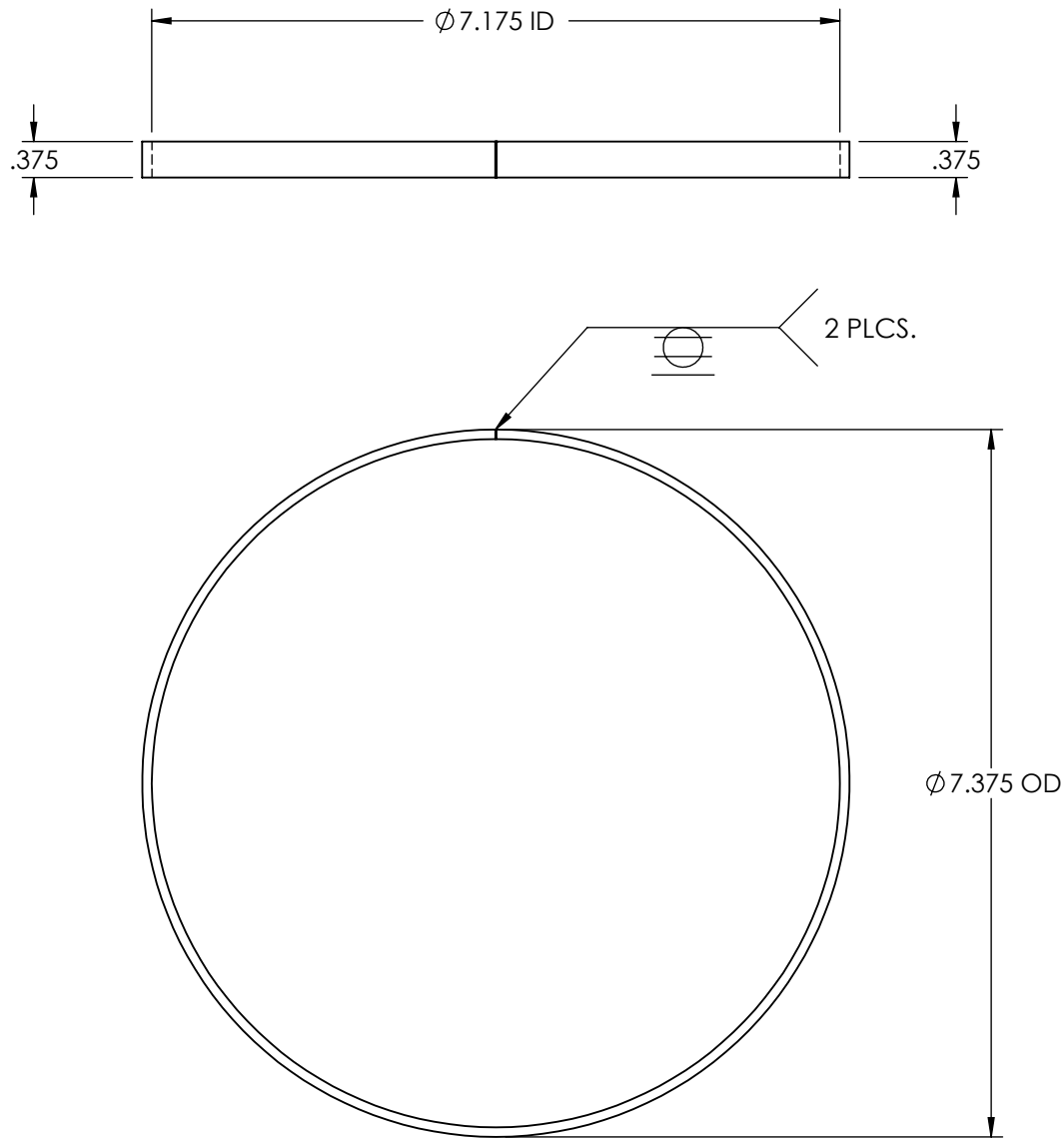


NOTES:

1. MATERIAL: .100 THK. ALUM. 5052-H32.
2. FINISH: PAINT LINEAR WHITE, SMOOTH.
3. DEBURR AND BREAK SHARP EDGES FOR SAFE HANDLING.


ITEM NO.	PART NUMBER	DESCRIPTION		QTY.
1	PCI-051911	COVER, BOTTOM, EYE-10 CAMERA		1
2	FHS-632-8	SELF CLINCHING, SS, STUD #6-32 X.50 LG		2

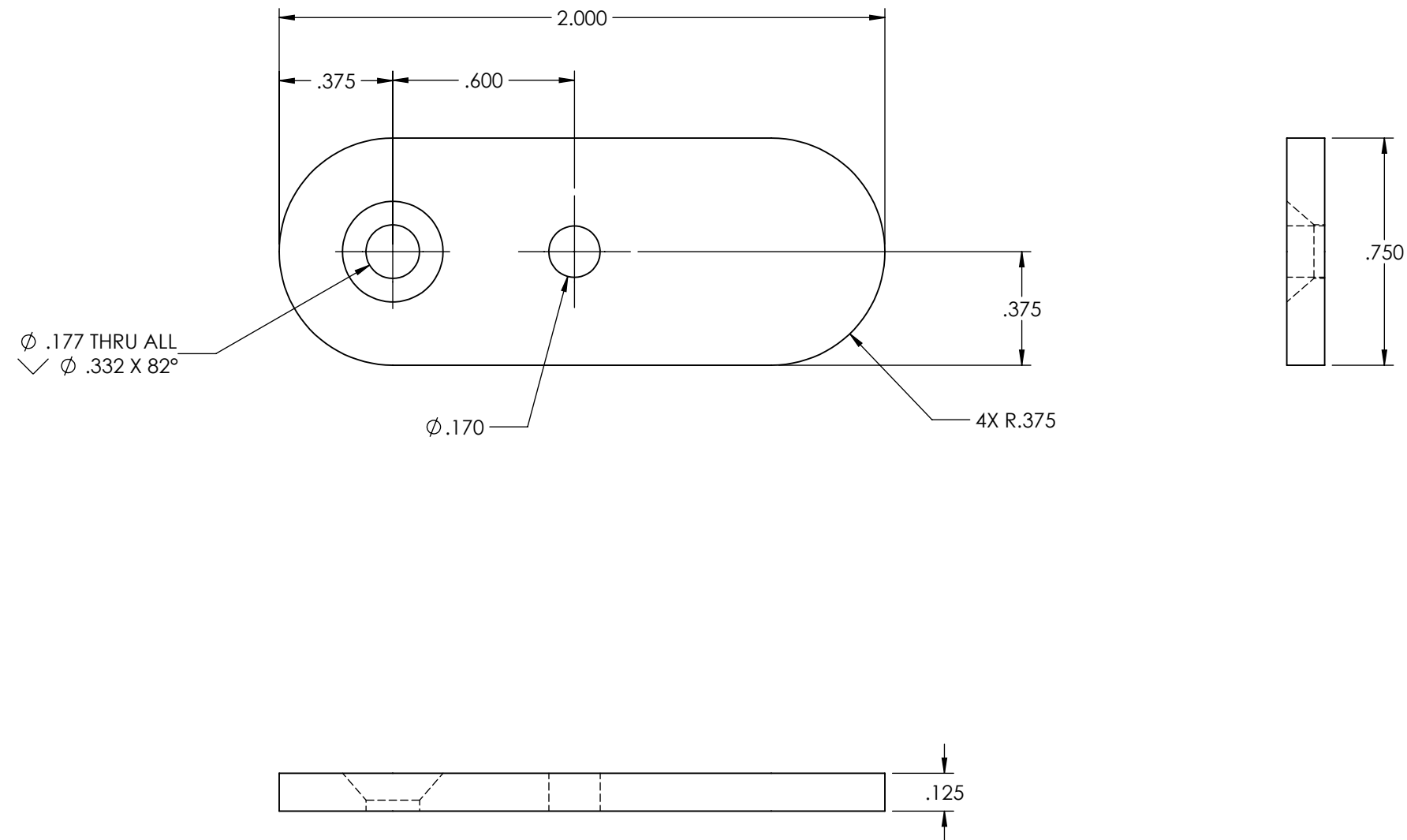
<div><p>Wolfvision, Inc. claims proprietary rights on the contents disclosed on this drawing and all processes, equipment, components, methods, or any other developments either directly or indirectly related to this project. This drawing is issued in confidence for engineering purposes only and may not be reproduced or used for manufacture of anything shown hereon without direct 'written' authorization from Wolfvision, Inc. to the user.</p></div>	TOLERANCES: Unless Otherwise Specified		FASCIA, EXTERIOR, EYE SERIES CAMERA WOLFVISION	
	Decimals: .xx +/- .015 .xxx +/- .010	Fractions: +/- 1/32" Angles: +/- 1/2°		
	File Name: FASCIA, EXTERIOR			
Date: 5-23-11	Material: .100 5052-H32 ALUM.	Finish: PAINT LINEAR WHITE, SMOOTH.		
Drawn By: RJS	Scale: NTS	Sheet 6 of 10	Drawing No. PCI 051911	Rev.



- NOTES:
1. MATERIAL: .100 THK. ALUM. 5052-H32
 2. FINISH: ZP FINISH
 3. DEBURR AND BREAK SHARP EDGES FOR SAFE HANDLING.


ITEM NO.	PART NUMBER	DESCRIPTION		QTY.
1	PCI-051811	RING, ALIGHMENT, 7.375 DIA. X .375 WIDE		1
2	PCI-051821	TAB, RING, ALIGNMENT, #6-32 CLEARANCE		2

<div></div> <p>Wolfvision, Inc. claims proprietary rights on the contents disclosed on this drawing and all processes, equipment, components, methods, or any other developments either directly or indirectly related to this project. This drawing is issued in confidence for engineering purposes only and may not be reproduced or used for manufacture of anything shown hereon without direct 'written' authorization from Wolfvision, Inc. to the user.</p>	TOLERANCES: Unless Otherwise Specified		RING, ALIGNMENT Ø 7.375 X .375 WIDE WOLFVISION	
	Decimals: Fractions: +/- 1/32" .xx +/- .015 .xxx +/- .010 Angles: +/- 1/2°			
	File Name: ---			
Date: 5-18-11	Material: .100 ALUM. 5052-H32	Finish: CLEAN - ZP FINISH		
Drawn By: RJS	Scale: NTS	Sheet 7 of 10	Drawing No. PCI-051811	Rev.



NOTES:

1. MATERIAL: .125 ALUM. 5052-H32
2. FINISH: ZP FINISH
3. DEBURR AND BREAK SHARP EDGES FOR SAFE HANDLING.



Wolfvision, Inc. claims proprietary rights on the contents disclosed on this drawing and all processes, equipment, components, methods, or any other developments either directly or indirectly related to this project. This drawing is issued in confidence for engineering purposes only and may not be reproduced or used for manufacture of anything shown hereon without direct 'written' authorization from Wolfvision, Inc. to the user.

TOLERANCES: Unless Otherwise Specified

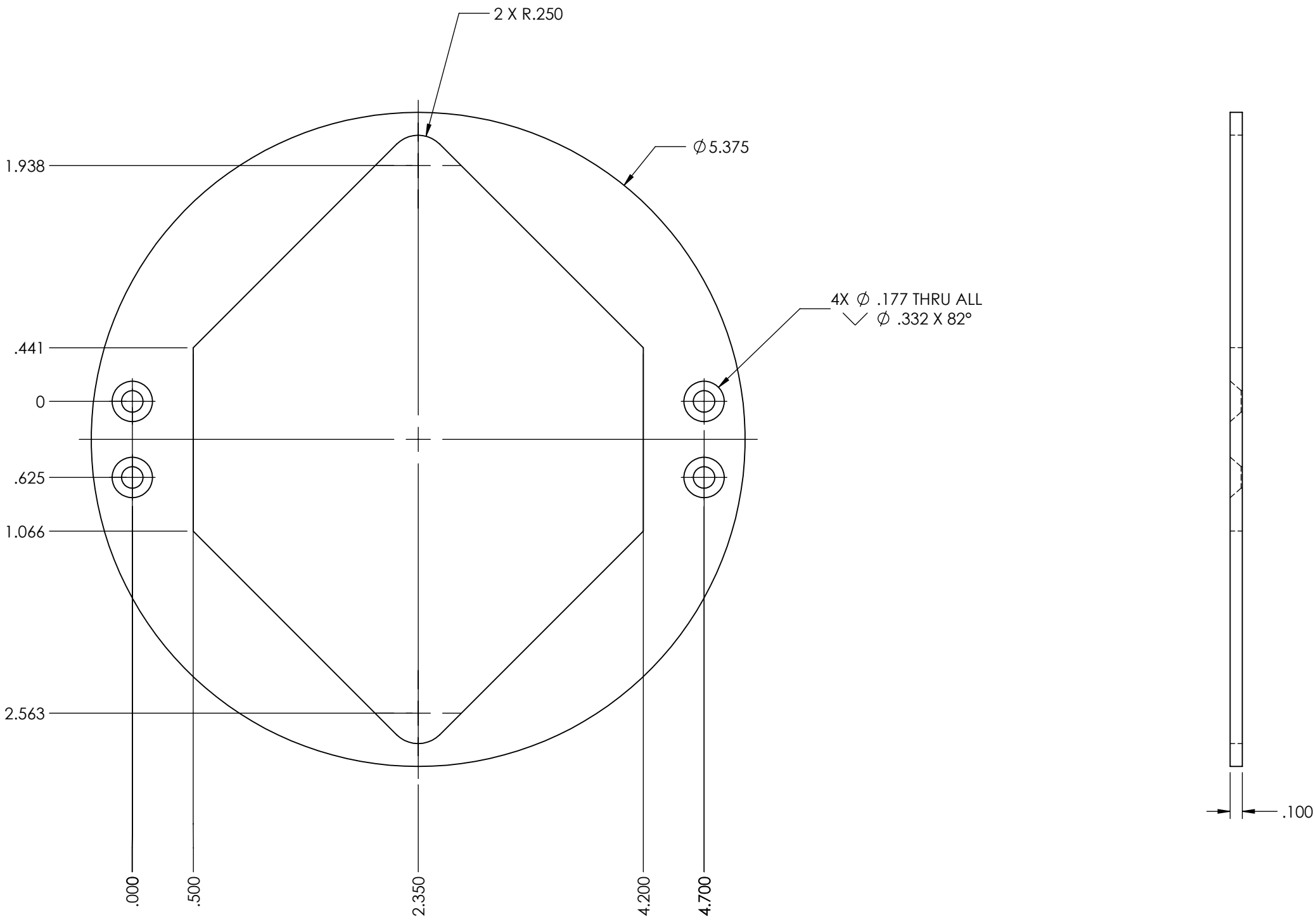
Decimals:	Fractions: +/- 1/32"
.xx +/- .015	
.xxx +/- .010	Angles: +/- 1/2°

File Name:

Date:	Material:	Finish:
5-23-11	.125 THK. ALUM. 5052-H32	ZP FINISH
Drawn By:	Scale:	
RJS	NTS	


Sheet 8 of 10	Drawing No.	Rev.
	PCI 052011	

REVISIONS				
ZONE	REV.	DESCRIPTION	DATE	APPROVED
-	A	CHANGED CSK'S LOCATIONS , CHG'D TO Ø .177 X Ø .332 X 82° DEG.	1-31-11	R.SHOOK



NOTES:

1. MATERIAL: .100 ALUM.. 5052-H-32
2. FINISH: CLEAN - ZP FINISH
3. DEBURR AND BREAK SHARP EDGES FOR SAFE HANDLING.
4. PROGRAM FILE : 113526-00
5. CUSTOMER : WOLFVISION



Wolfvision, Inc. claims proprietary rights on the contents disclosed on this drawing and all processes, equipment, components, methods, or any other developments either directly or indirectly related to this project. This drawing is issued in confidence for engineering purposes only and may not be reproduced or used for manufacture of anything shown hereon without direct 'written' authorization from Wolfvision, Inc. to the user.

TOLERANCES: Unless Otherwise Specified

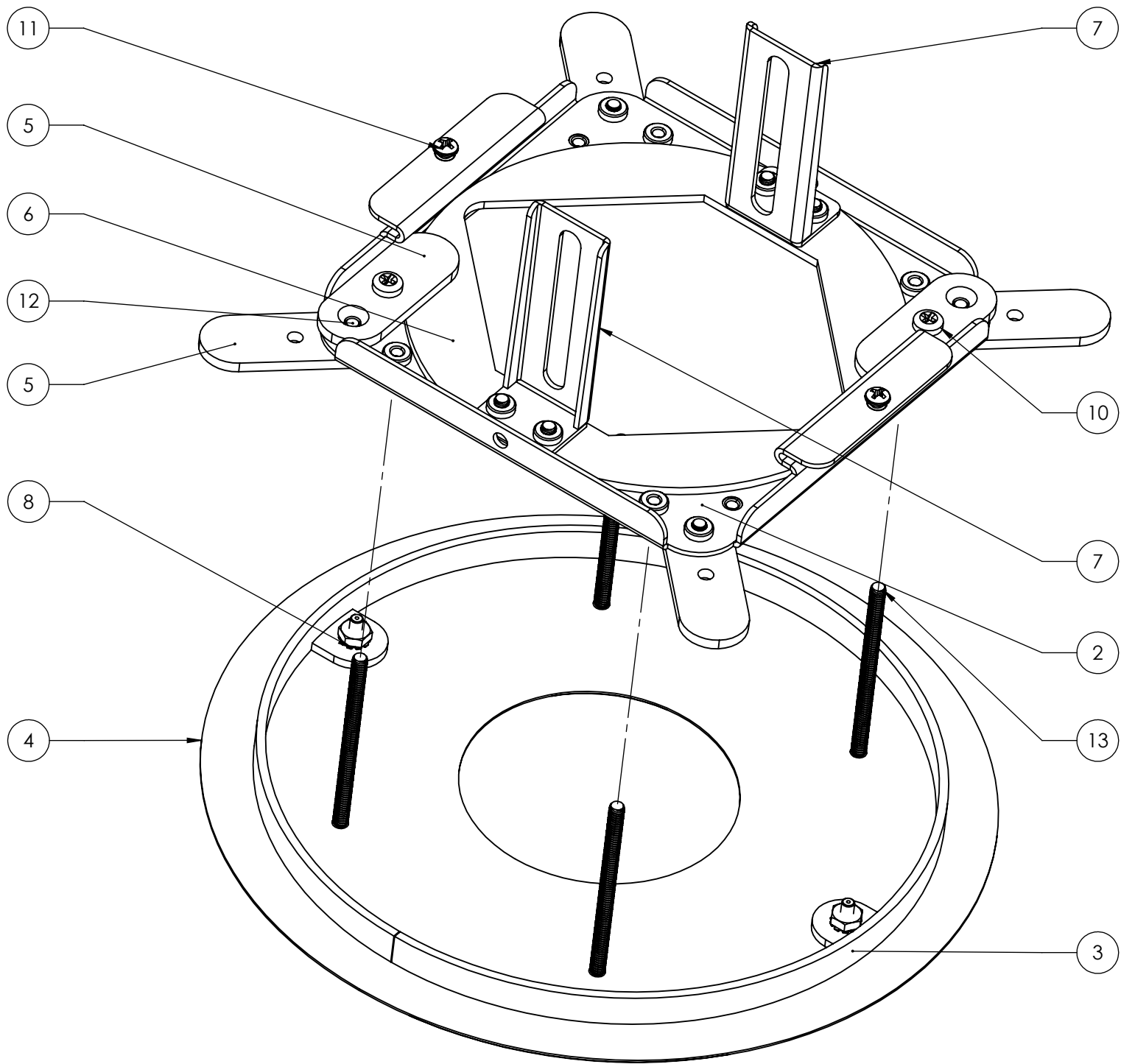
Decimals:	Fractions:
.xx +/- .015	+/- 1/32"
.xxx +/- .010	Angles: +/- 1/2°

File Name:
BRACKET, CIRCULAR MTG., CAMERA

Date: 5-21-11	Material: .100 ALUM. 5052-H32	Finish: NONE
Drawn By: RJS	Scale: NTS	Sheet 9 of 10

Drawing No. PCI-052121	Rev. A
------------------------	--------

BRACKET, CIRCULAR MTG.
CAMERA
WOLFVISION




NOTES:

- 1. MATERIAL: SEE BOM.
- 2. FINISH: PAINT LINEAR WHITE, SMOOTH, **EXTERIOR FASCIA ONLY**
- 3. DEBURR AND BREAK SHARP EDGES FOR SAFE HANDLING.
- 4. PAINT COUNTERSINK SCREW HEADS (ITEM 14) LINEAR WHITE. **QTY. 4**

REVISIONS				
ZONE	REV.	DESCRIPTION	DATE	APPROVED
-	D	CHANGED (4) CSK SCREWS TO 2.500" LONG, ITEM 14	2-17-12	R. SHOOK

ITEM NO.	PART NUMBER	DESCRIPTION	QTY.
2	PCI-051611	TRAY, MOUNTING	1
3	PCI-051811	RING, ALIGNMENT, Ø7.375 X .375 WIDE	1
4	PCI-051911	FASCIA, EXTERIOR, EYE SERIES CAMERA	1
5	PCI-052011	LEG, PIVOTING, SUPPORT, FRAME	6
6	PCI 052121	BRACKET, CIRCULAR MTG., CAMERA	1
7	PCI-051621	BRACKET, CAMERA ADJUST	2
8	90675A007	NUT, KEPS, #6-32, HEX, STEEL, ZINC	2
9	90402A551	SCREW, SEMS, PANHD, PHILLIPS, #.25-20 X 1.00, STL. ZINC	4
10	90272A191	SCREW, PANHD, PHILLIPS, #8-32 X .312 LG, STL. ZINC	5
11	91772A142	SCREW, PANHD, PHILLIPS, #6-32 X .125 LONG, S/S	2
12	90273A191	SCREW, FLAT CSK, 82 DEG., #8-32 X .312 LG. STL. ZINC	8
13	9000021712	SCREW, FLAT, 82 DEG., PHILLIPS, #8-32 X 2.50 LG, STL. ZINC	4



Wolfvision, Inc. claims proprietary rights on the contents disclosed on this drawing and all processes, equipment, components, methods, or any other developments either directly or indirectly related to this project. This drawing is issued in confidence for engineering purposes only and may not be reproduced or used for manufacture of anything shown hereon without direct 'written' authorization from Wolfvision, Inc. to the user.

TOLERANCES: Unless Otherwise Specified

Decimals: Fractions: +/- 1/32"

.xx +/- .015

.xxx +/- .010 Angles: +/- 1/2°

File Name:

EYE KIT, SHEETROCK INSTALLATION, WOLFVISION

Date: 5-19-11 Material: SEE BOM

Drawn By: RJS Scale: NTS Sheet 10 of 10

EYE KIT,
SHEETROCK INSTALLATION
WOLFVISION

Finish: ---

Drawing No. ASSY EYE-10 SHTROCK Rev. D