

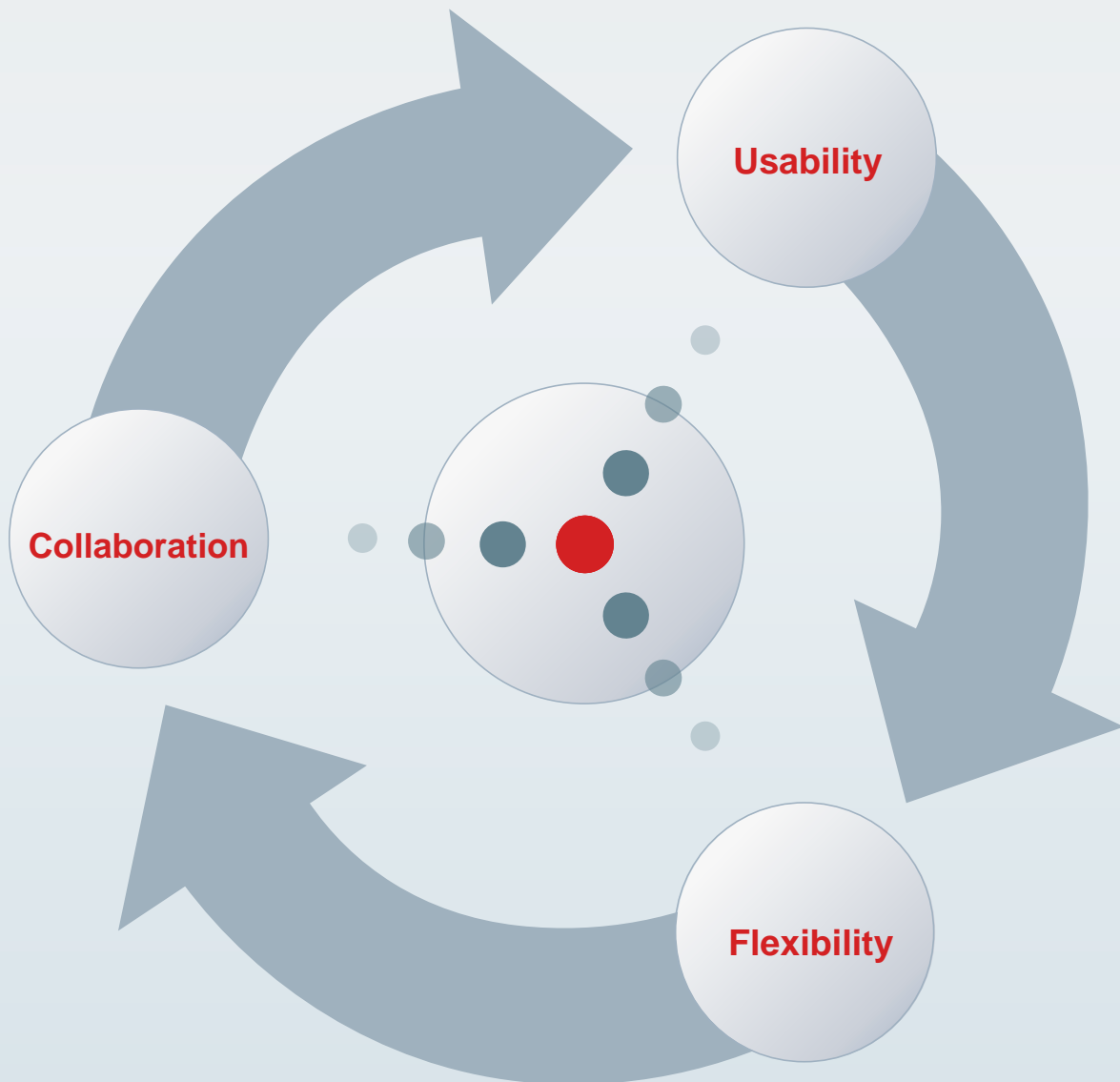


WolfVision Connectivity Software: Get more out of your Visualizer



Connectivity Software

WolfVision's Connectivity Software is a very powerful tool designed to increase the functionality of our range of visualizers and cameras: Not only does it allow you to capture and save live and moving images, it will also allow you to stream those images over a network. Furthermore firmware updates can be loaded automatically via the software.



Empower your Visualizer

WolfVision's Connectivity 2 is a newly designed piece of software with a modern user interface. Unique to Connectivity 2 is the possibility to capture not just video recordings but also audio recordings, as well as streaming visualizer images onto a network. In addition it comes with a newly integrated annotation tool offering a wide range of painting and writing options to create more effective presentations.

The Connectivity 2 is available for Windows XP, Vista and 7, and just like the previous version it will be free of charge for all WolfVision customers.

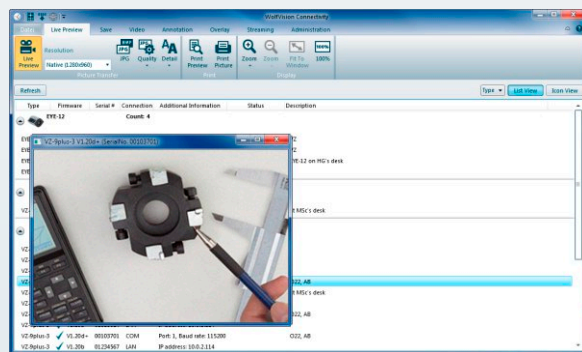
Usability

WolfVision's Connectivity 2 offers a completely new graphical user interface, which allows you to use the firmware even more intuitively. Due to its modular design the software can be easily tailored to suit your individual requirements – you choose whether you want the “Viewer-function“ of the preview monitor, the complete version including the annotation tool or the administrator function.



Flexibility

WolfVision's visualizers are fully controllable using the interactive remote control within the connectivity software. For zooming in or out, recording or saving live images, our software helps to increase the functionality of your visualizer.



Besides the multi lingual settings, our Connectivity 2 offers greater flexibility when a number of visualizers are being used. On the one hand they can be upgraded automatically via a firmware update, while on the other hand it allows you to operate various visualizers in parallel saving a great deal of time and costs for IT administrators.

Collaboration

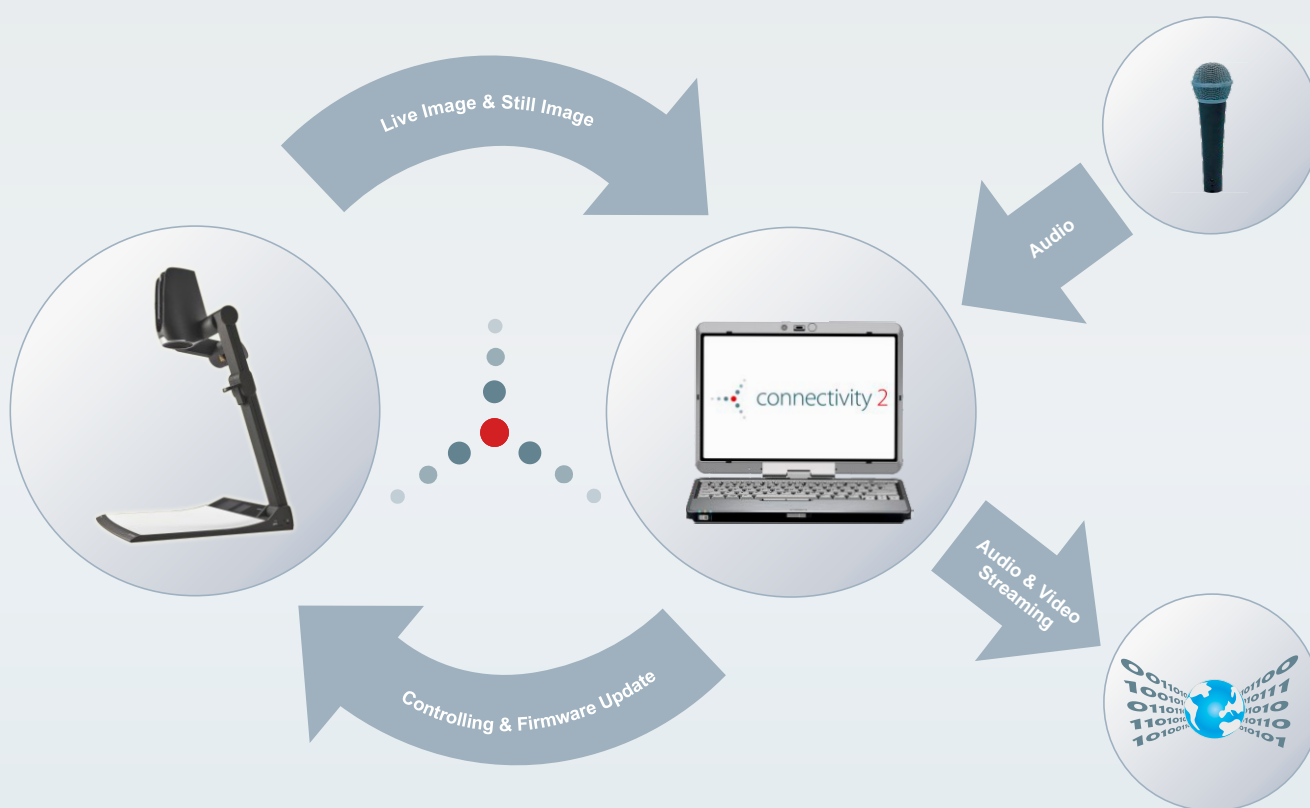
Up till now streaming was only possible with those WolfVision visualizers that had a built-in ethernet port. Loading Connectivity 2 onto your PC or laptop means you can now perform this function with all other WolfVision models too. Lecturers and trainers can now do presentations interactively via the web with an audience thousands of miles away.

As with its previous version, Wolfvision's Connectivity 2 works perfectly with all interactive whiteboards. Furthermore, it is fully TWAIN and WIA compatible.



More information: www.wolfvision.com/connectivity

Application Diagram



www.wolfvision.com

Printed in Austria, January 2011

Head Office:

WolfVision GmbH
6833 Klaus / Austria
Tel. ++43-5523-52250
wolfvision@wolfvision.com

Germany Sales Office
WolfVision GmbH
Tel. 0800-9828-787
wolfvision.deutschland@wolfvision.com

USA West Region Sales Office
WolfVision, Inc.
Tel. ++1-650-648-0002
sales@wolfvision.us

USA East Region Sales Office
WolfVision, Inc.
Tel. ++1-770-931-6802
sales@wolfvision.us

Asia Sales Office
WolfVision Asia
Tel. ++65-6366-9288
info@wolfvisionasia.com

Canada Sales Office
WolfVision Canada, Inc.
Tel. ++1-613-741-9898
wolfvision.canada@wolfvision.com

Japan Sales Office
WolfVision Co. Ltd.
Tel. ++81-3-33603231
wolfvision.japan@wolfvision.com

UK Sales Office
WolfVision UK Ltd.
Tel. ++44-161-435-6081
wolfvision.uk@wolfvision.com